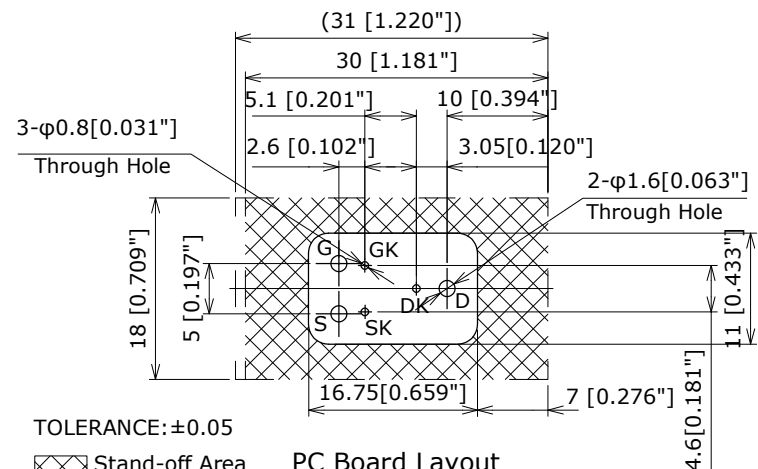
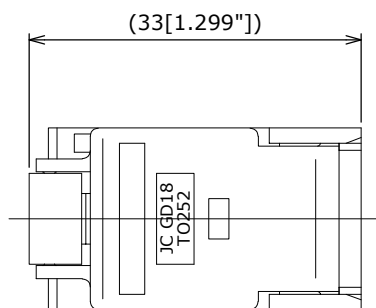
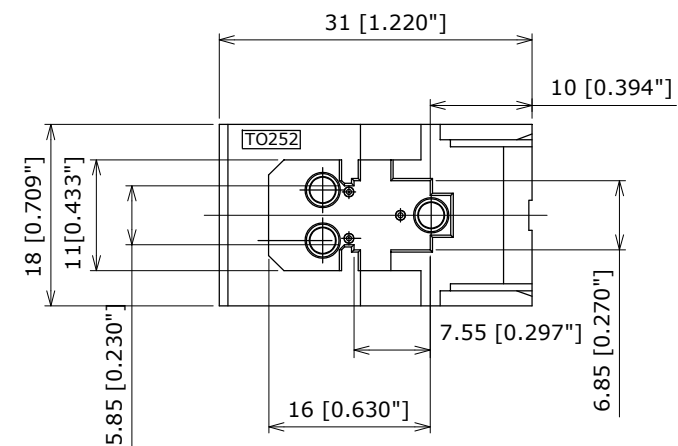
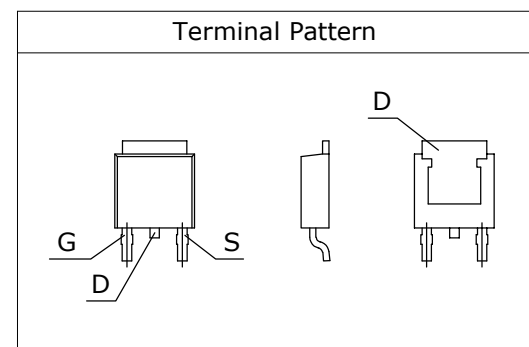
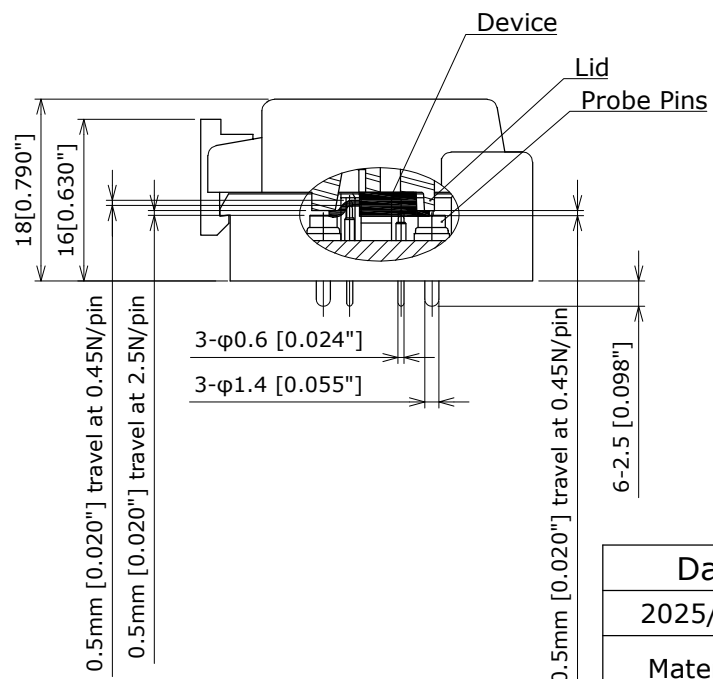
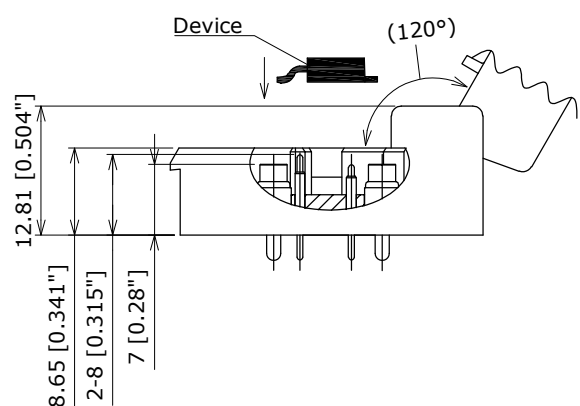


Kelvin contact type



TOLERANCE: ±0.05
 ☒ Stand-off Area
PC Board Layout
 Top View

D : Drain
 DK : Drain(Kelvin)
 S : Source
 SK : Source(Kelvin)
 G : Gate
 GK : Gate (Kelvin)



D : Drain
 G : Gate
 S : Source

- Specifications**
- Contact Resistance : 50mΩ max
 - Current Rating : 10A at 25°C (Between Drain and Source)
Room temperature with 30°C T-Rise
 - Withstanding Voltage : DC500V 1min at 25°C
 - Insulation Resistance : 500MΩmin at DC500V
 - Operating Temperature : -40°C~+200°C

Date	JC ELECTRONICS CORPORATION	
2025/05/22		
Materials Finish	Body : High Temp Thermoplastic Other parts : SUS, etc.	
Dimensions Style	Title	
mm [inch]	TO252 TEST SOCKET	
Third Angle Projection	Part Number	
Rev.No	0	GD18-TO252-K-755