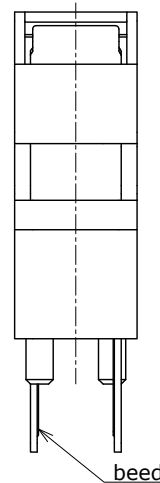
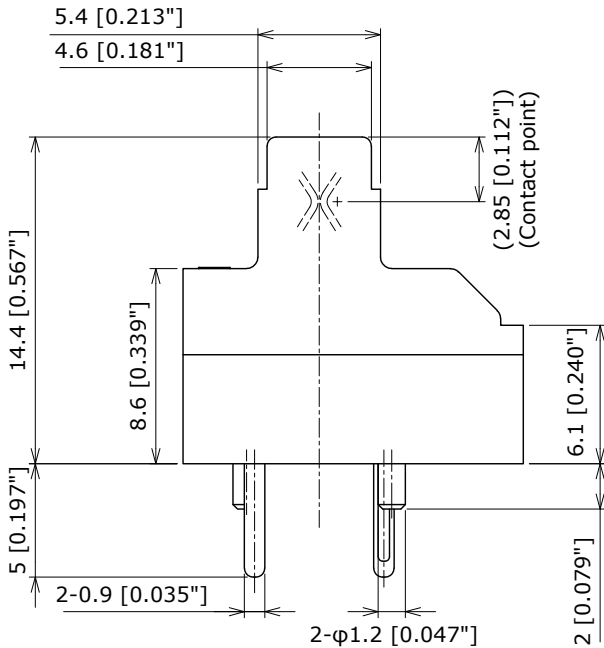


Isometric view

PC Board layout
(Top view)
(Tolerance : ± 0.05)



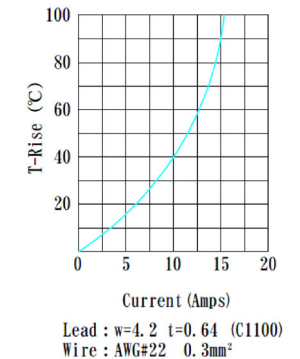
Specifications

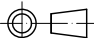
- Durability : 10,000 cycles min.
- Contact resistance : 20m Ω max
- Operating temperature : -55°C~+175°C
- *Including terminal temperature rise.

Note

- 1.First, fix the product to the PCB with M2 bolt and nut. After that, perform the soldering and cable wiring processes.
- 2.Bolt and nut are not included.
- 3.The required bolt length varies depending on the usage. Please prepare a M2 bolt with a length that suits your usage.
- 4.When the board is not used, fix the base insulator and cover insulator with bolt and nut.

T-Rise Current Chart (Reference)



Date		JC ELECTRONICS CORPORATION
2024/06/25		
Materials Finish		TERMINAL : Copper Alloy, t0.3[0.012"] Au Plating over Ni INSULATOR : Heat Resisting Plastics
Dimensions Style mm [inch]		Title POWER MODULE SOCKET(5.4 Pitch)
 Third Angle Projection		Part Number PMS-5400P-S
Rev.No	0	