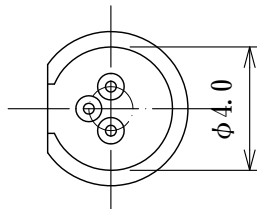
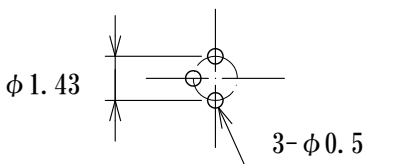
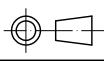


PCB dimension
(typical)



Acceptable Plug $\phi 0.35$ typical

Date		JC ELECTRONICS CORPORATION	
2014/12/26			
Materials Finish	SOCKET PINS	Contact: Beryllium Copper Gold over Ni Plated	
	INSULATOR	Body: Brass Gold over Ni Plated LCP (Black)	
Dimensions Style	Title		
mm	LASER DIODE SOCKET		
 Third Angle Projection	Part Number		
	LD143-3P-H150-E		
Rev. No	0		

Ⓐ