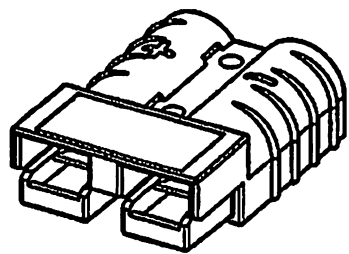
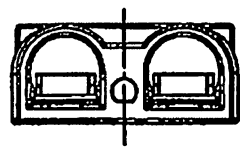
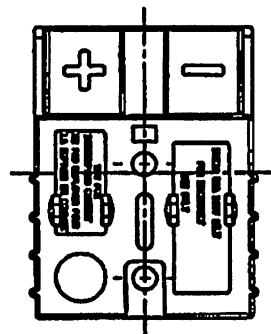
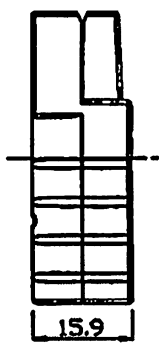
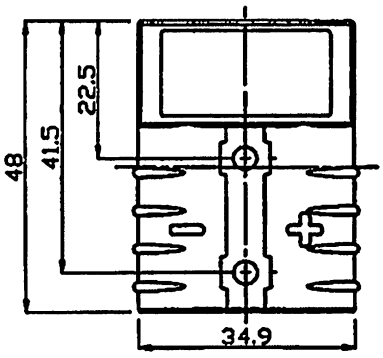


A B C D E F G H X

REV DESCRIPTION DATE



SCALE 1:1



| CAT.NO.      | COLOR  |
|--------------|--------|
| BMC2S-GRAY   | GRAY   |
| BMC2S-RED    | RED    |
| BMC2S-ORANGE | ORANGE |

NOTE:  
 1. OPERATING TEMPERATURE RANGE: -20°C ~ +125°C  
 2. MAXIMUM ELECTRICAL RATING: 600 VOLTS MAX.  
 3. HOUSING ELECTRICAL: POLYCARBONATE (PC)  
 4. SPRING MATERIAL: STAINLESS STEEL

1  
2  
3  
4  
5  
6

1  
2  
3  
4  
5  
6

A B C D E F G H X

A

B

C

D

E

F

G

H

| REV | DESCRIPTION | DATE |
|-----|-------------|------|
|-----|-------------|------|

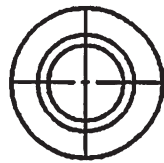
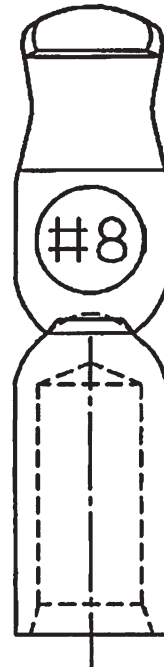
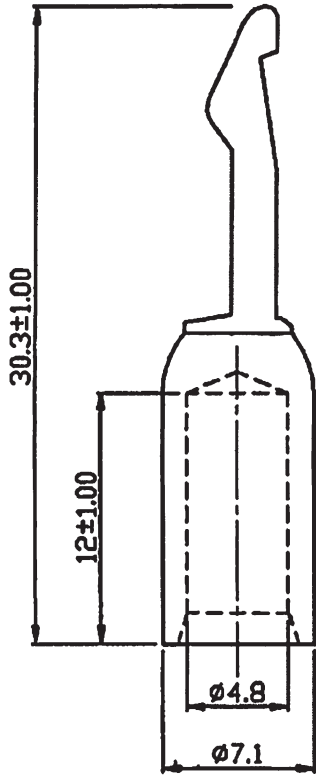
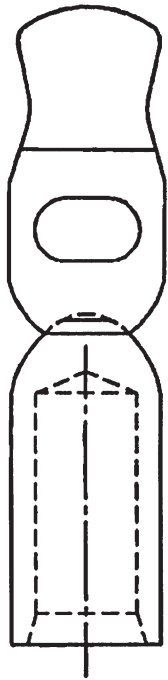
P/N BMC8AG-E

MAXIMUM ELECTRIC CURRENT

|        | SINGLE | DUAL |
|--------|--------|------|
| A.W.G. | 8      | 8    |
| AMP.   | 60     | 45   |

NOTE :

SURFACE TREATMENT : SILVER PLATED



1

2

3

4

5

6

1

2

3

4

5

6

A

B

C

D

E

F

G

H