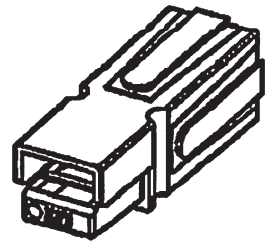


REV	DESCRIPTION	DATE
-----	-------------	------

CAT.No	COLOR
BMC1M-BLACK	BLACK
BMC1M-BLUE	BLUE
BMC1M-RED	RED
BMC1M-WHITE	WHITE
BMC1M-YELLOW	YELLOW



SCALE 1:1

NOTE:
 1. OPERATING TEMPERATURE RANGE : -20°C~+125°C
 2. MAXIMUM ELECTRICAL RATING : 600 VOLTS MAX.
 3. HOUSING ELECTRICAL : POLYCARBONATE(PC)
 4. SPRING MATERIAL : STAINLESS STEEL

A

B

C

D

E

F

G

H

REV	DESCRIPTION	DATE
-----	-------------	------

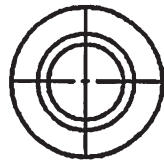
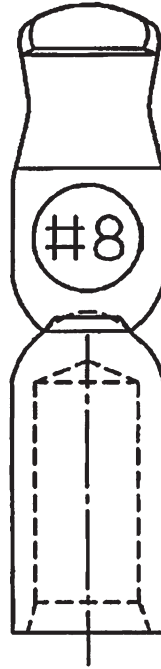
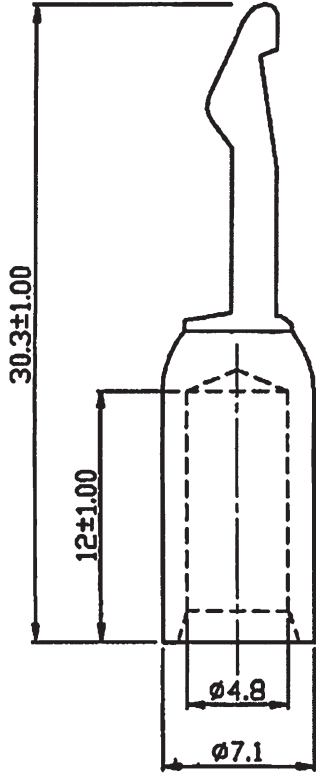
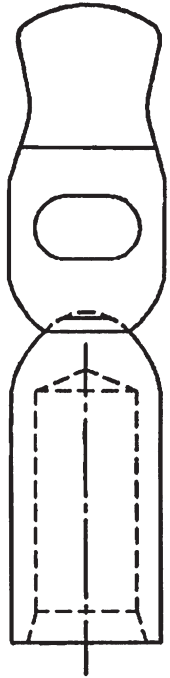
P/N BMC8AG-E

MAXIMUM ELECTRIC CURRENT

	SINGLE	DUAL
A.W.G.	8	8
AMP.	60	45

NOTE :

SURFACE TREATMENT : SILVER PLATED



1

2

3

4

5

6

1

2

3

4

5

6

A

B

C

D

E

F

G

H