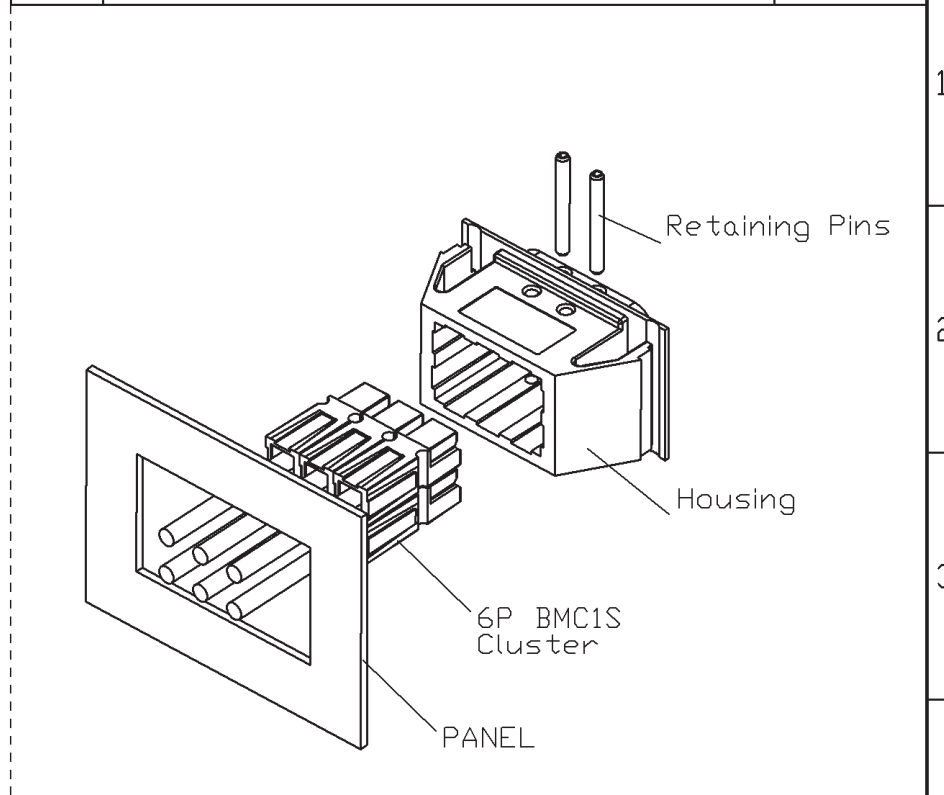
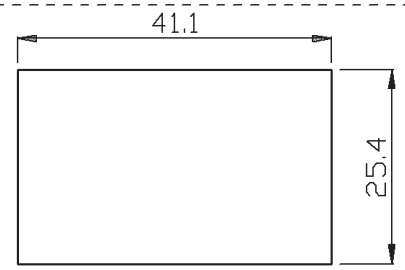


REV	DESCRIPTION	DATE
-----	-------------	------



TYPICLA ASSEMBLE



NOTE :

- T-6BMCS-L :
 OPERATING TEMPERATURE RANGE : -20°C~+125°C
 MAXIMUM ELECTRICAL RATING : 600 VOLTS MAX.
 HOUSING MATERIAL : POLYCARBONATE (PC)
 HOUSING FLAMMABILITY RATING : UL94V-0
- K7-2.4*21 : $\phi 2.4 \times 21L$
 MATERIAL : STEEL
 SURFACE TREATMENT : ZINC PLATING
- DESIGEND FOR PANELS 0.76-3.4mm THICK

CAT No. 6BMCS-SET-L-E