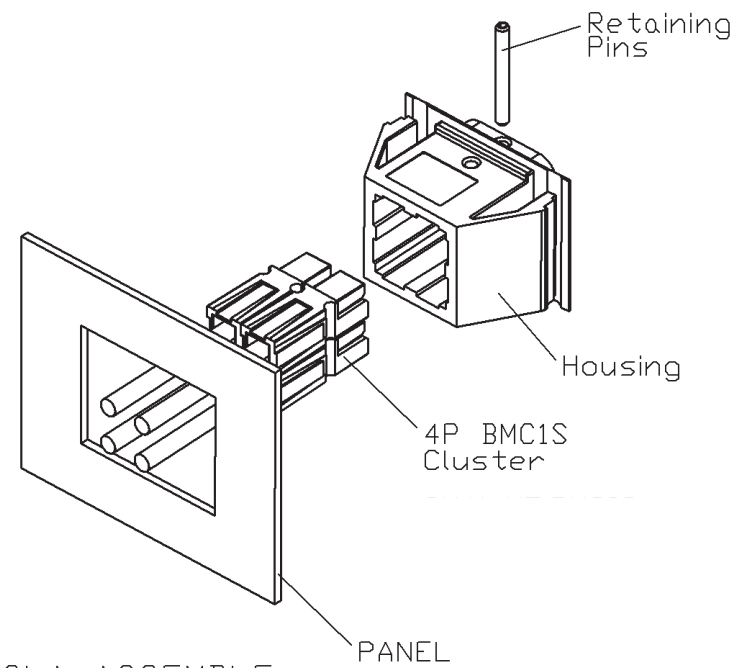
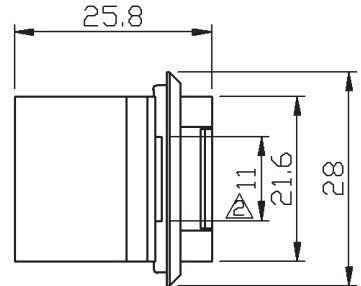
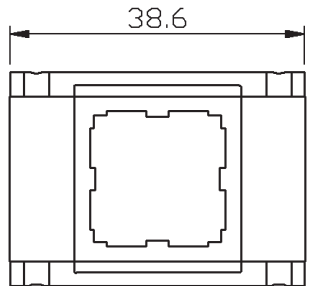
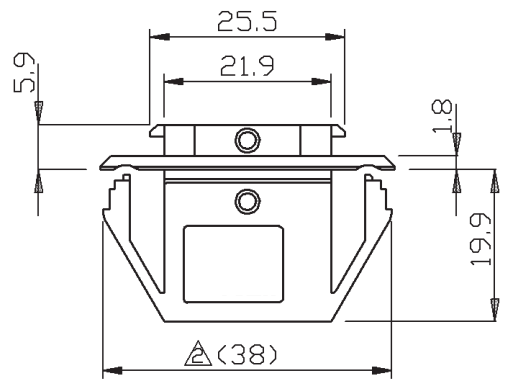
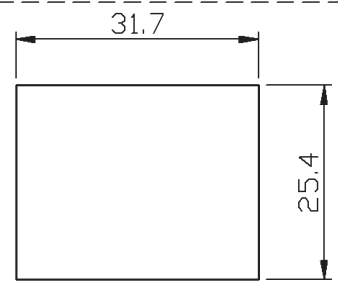


A B C D E F G H

REV	DESCRIPTION	DATE
-----	-------------	------



TYPICLA ASSEMBLE



- NOTE :
- T-4BMCS-L :
 OPERATING TEMPERATURE RANGE : -20°C~+125°C
 MAXIMUM ELECTRICAL RATING : 600 VOLTS MAX.
 HOUSING MATERIAL : POLYCARBONATE (PC)
 HOUSING FLAMMABILITY RATING : UL94V-0
 - K7-2.4*21 : ϕ 2.4*21L
 MATERIAL : STEEL
 SURFACE TREATMENT : ZINC PLATING
 - DESIGEND FOR PANELS 0.76-3.4mm THICK

CAT No. 4BMCS-SET-L-E

A B C D E F G H